

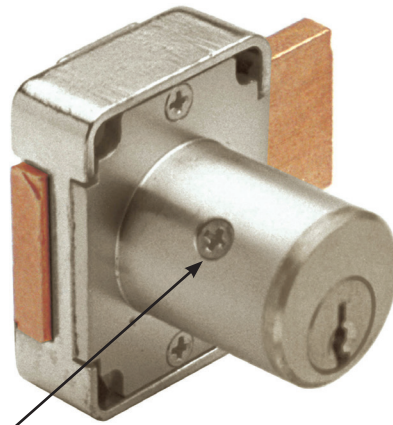
Product Data Sheet

100/200 Series

*N Series: National Keyway Grade 1
Door & Drawer Cabinet Locks*

ANSI/BHMA: Passed ANSI/BHMA A156.11
Grade 1 performance requirements.

**100DR
Door Lock**
ANSI/BHMA
No. E07121



Cylinder retaining screw
for quick and easy
rekeying

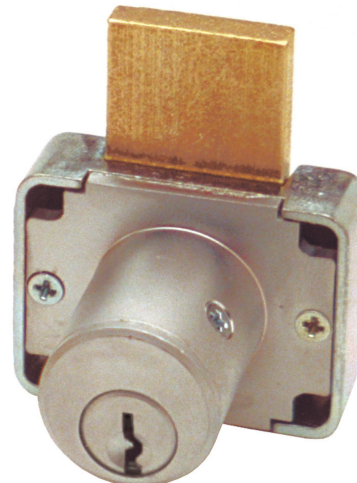


56-1
bar strike included
with 100DR



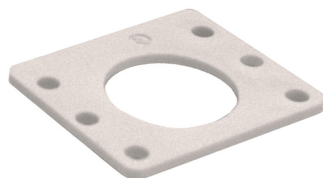
12-3
angle strike included with
200DW

**200DW
Drawer Lock**
ANSI/BHMA
No. E07041

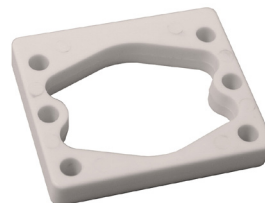


Solid brass cylinder

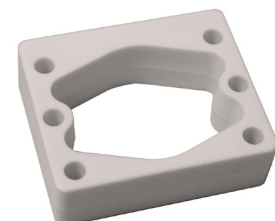
Internal spacers for a flush fit on varying material thicknesses



WP21
3/32"



WP22
1/4"



WP23
1/2"

100/200 Series

N Series: National Keyway Grade 1 Door & Drawer Cabinet Locks



100 Series Cabinet Door Lock

Rekeyable: Easily rekeyable via set-screw cylinder removal mechanism

Testing: Passed ANSI/BHMA A156.11 Grade 1 performance requirements (E07121).

US Patent Nos: 4,899,563; 4,920,774

Body: Zinc die cast

Bolt: Brass, 3/4" projection

Barrel length: 7/8" or 1-3/8"

Barrel diameter: 7/8"

Finish: US26D (satin chrome), US4 (satin brass) or US10B* (oil rubbed bronze)

Cylinder: National D4291 keyway

Keying: KD/KA (4 pin standard), stock KA Nos. 101, 103, 107, 915. Master keying available (5 pin standard).

Standard function: Key removable in locked or unlocked position (non-handed).

Key-retaining function: Key removable in locked position only. Specify handing (KL = left-hand or KR = right-hand) at time of order.

Non-magnetic: 100M product contains all non-magnetic components and parts suitable for use in MRI (magnetic resonance imaging) applications.

200 Series Cabinet Drawer Lock

Rekeyable: Easily rekeyable via set-screw cylinder removal mechanism

Testing: Passed ANSI/BHMA A156.11 Grade 1 performance requirements (E07041).

US Patent Nos: 4,899,563; 4,920,774

Body: Zinc die cast

Bolt: Brass, 3/4" projection

Barrel length: 7/8", 1-3/8" or 1-5/8"

Barrel diameter: 7/8"

Finish: US26D (satin chrome), US4 (satin brass) or US10B* (oil rubbed bronze)

Cylinder: National D4291 keyway

Keying: KD/KA (4 pin standard), stock KA Nos. 101, 103, 107, 915. Master keying available (5 pin standard).

Standard function: Key removable in locked or unlocked position (non-handed).

Key-retaining function: Key removable in locked position only. Specify handing (KV = vertical-hand or KI = inverted-hand) at time of order.

Non-magnetic: 200M product contains all non-magnetic components and parts suitable for use in MRI (magnetic resonance imaging) applications.

Accessories

Includes:

- 56-1 bar strike included with 100DR
- 12-3 angle strike included with 200DW

Available separately:

- WP21 3/32" thick plastic spacers
- WP22 1/4" thick plastic spacers
- WP23 1/2" thick plastic spacers
- 12-1, 12-2, 07S strikes
- TR1256 trim ring
- ETS2-125 - through-bolt plate, 1/8" thick
- ETS2-250 - through-bolt plate, 1/4" thick
- ETST2 - through-bolt plate template

Through-bolt plate (optional)

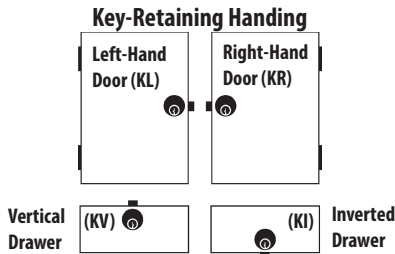
- External metal 1/8" or 1/4" through-bolt plate allows for an attractive flush mounting of the cabinet lock face
- Increases security of installation through reinforcement of cabinet face and direct connection of lock mounting screws to through-bolt plate's binder posts
- Available in US3 and US26D finishes
- Includes mounting screws

Through-bolt plate template (optional)

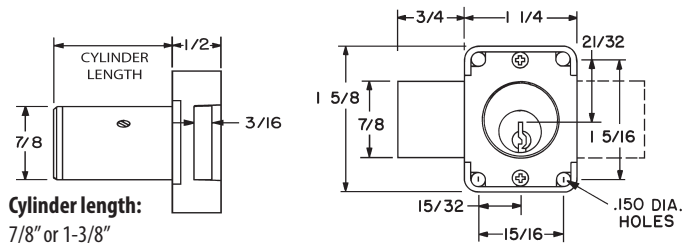
- Allows for proper mounting hole placement of through-bolt plate
- Can be used as a 1/8" shim spacer
- Available in US3 and US26D finishes

Optional trim spacers and templates can be used for through-bolt mounting of Olympus cabinet locks. Optional trim spacers and templates are available separately.

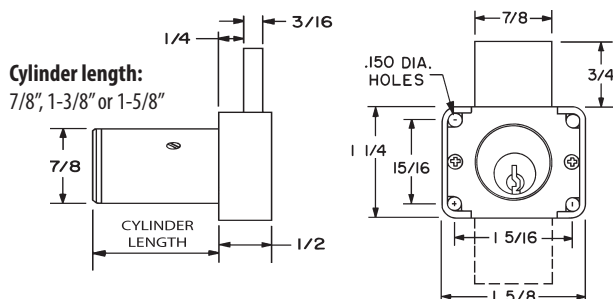
*US10B finish not available on 100DR 1-3/8" or 200DW 1-5/8" barrel length locks.



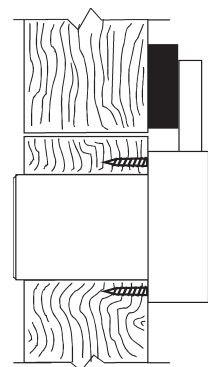
100 Series Dimensions



200 Series Dimensions



Typical Installation



100DR - top view
200DW - side view

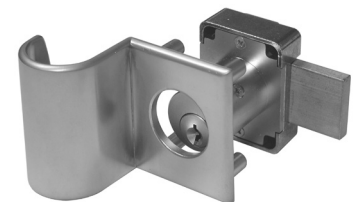
ETS2 Through-bolt plate



ETST2 Through-bolt plate template



U.S. Patent No. D490,686



ETS2-PL Through-bolt pull